

(.)

2015

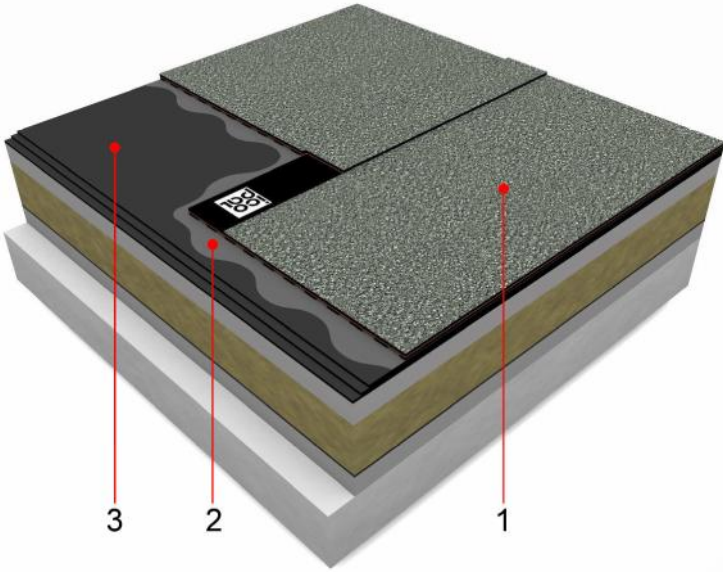
		3
1		4
1.1		4
1.1.1		4
1.1.2		5
1.1.3		5
1.2		6
1.2.1		6
1.3	ICOPAL.	6
1.4		7
2		7
2.1		7
2.2		9
2.3		12
3		13
4		13
5		14
6		14
7		14
		15
		15

ICOPAL
(. . . 1),

(. . . 1).

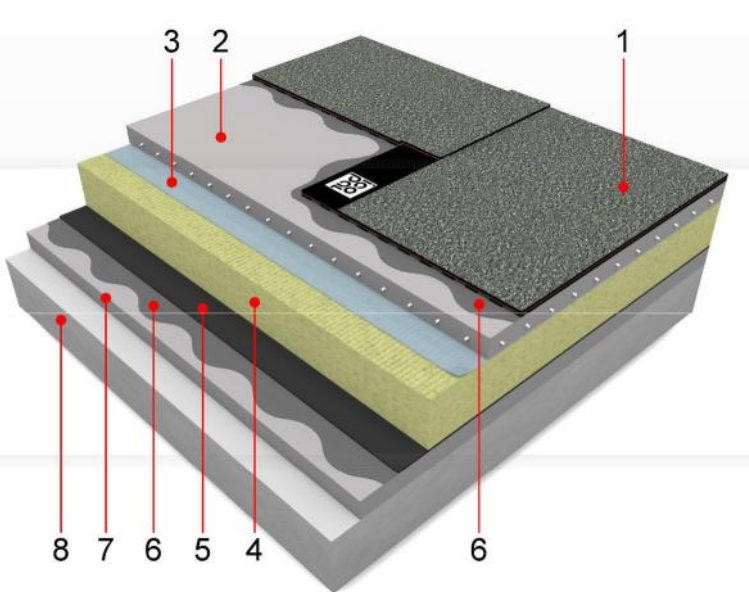
.1

- 1 СИНТАН СОЛО ВЕНТ
- 2 ICOPAL®
- 3



.1

- 1 СИНТАН СОЛО ВЕНТ
- 2 ()
- 3 () /
- 4
- 5
- 6 ICOPAL®
- 7
- 8



1

- 1. - *
- 2. - *

1.1

1.1.1

5.7

()

Syntan® ()

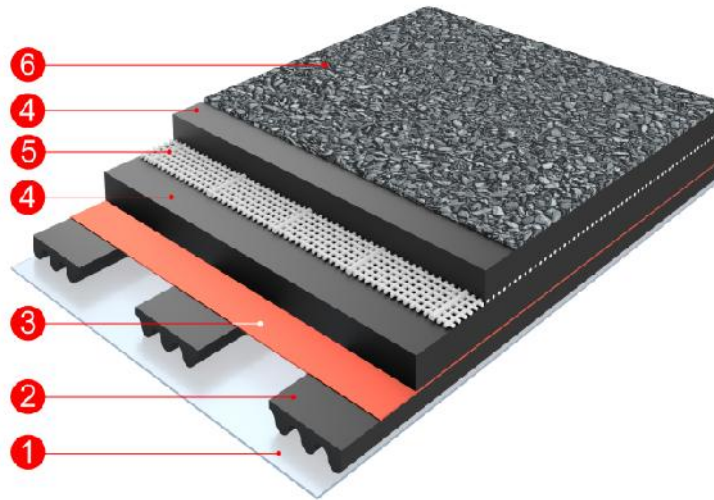
100

-
-

SYNTAN®

ICOPAL®

(. . . 2).



. 2

- 1)
- 2)
- 3)
- 4)
- 5)
- 6)

Syntan®

1.1.2

1 2,		5.7
	/50	600
R=25 ,	°	минус 25
	°	100
		7 1

1.1.3

Синтан Соло Вент

-

1000 ° ,

SYNTAN,

SYNTAN

()

ICOPAL,

25%.

CO₂

1.2

1.2.1

		/	/	
		/		
			"	"
		5.0/4.0	5.0	5.6
	/50	500	500	900
R=25				минус 25
		100/95		100
		10 1	10 1	7 1

1.3

ICOPAL.

ICOPAL

*

ICOPAL®

		20-30
	%	35
t=23° , / 2,		0,2-0,3
		21,5

1.4

- ;
- ;
- ICOPAL®;
- ;
- ;
- ;
- (. . .3);
- (. . .4)
- (. . .5)

.3



.4



.5



2

2.1

-
-
-
-

() 12 ()
 () 10

3x3 4x4 6x6 10 6

150-200
 50

ICOPAL®

5%

10

2

ICOPAL®

100-150
 ICOPAL®

30

15...20

500

15...20

ICOPAL® (. .6)

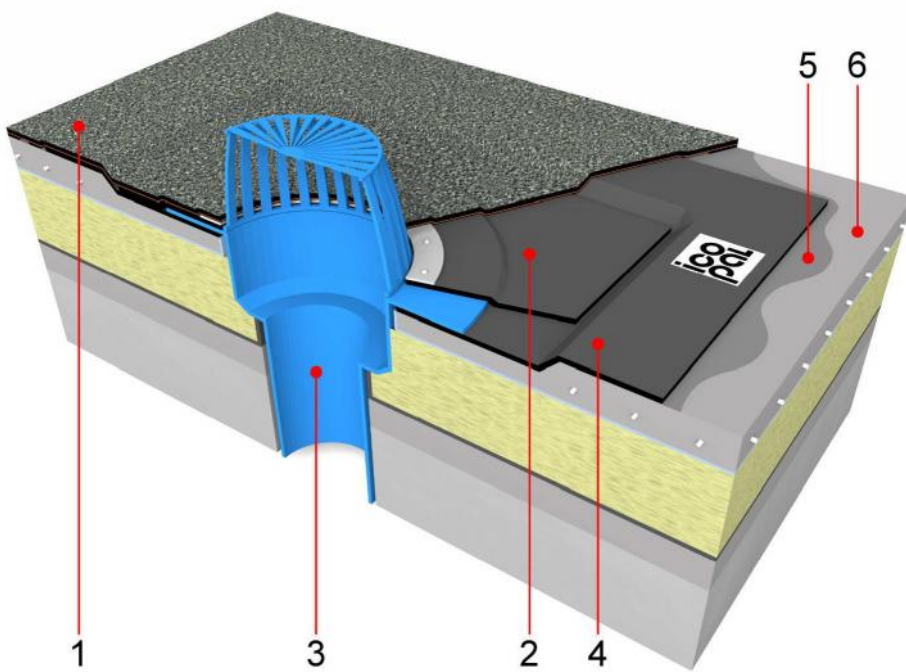


.6

2.2

1000 1000

(. . .7).



.7

1

2

3

4

1000 1000

5

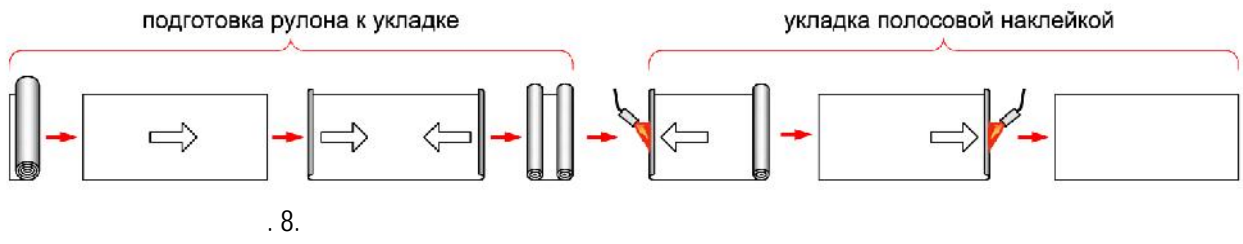
ICOPAL

6

Выравнивающая армированная цементно-песчаная стяжка

1-

(. . .8):



•

).

•

•

•

•

(1).

•

2-

•

•

•

10

•

- 100 /150 .

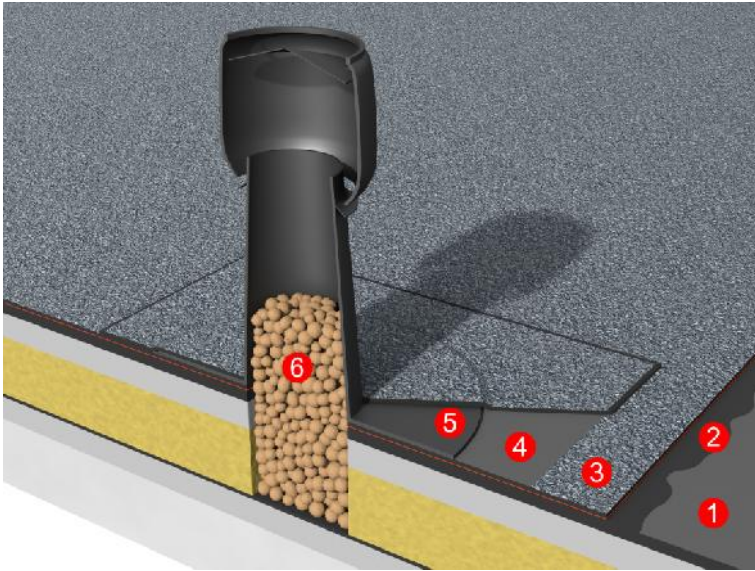
•

20

+15° .

•

(. . 9).



. 9

- 1) C
- 2)
- 3)
- 4)
- 5)
- 6)

ICOPAL

2.3

100

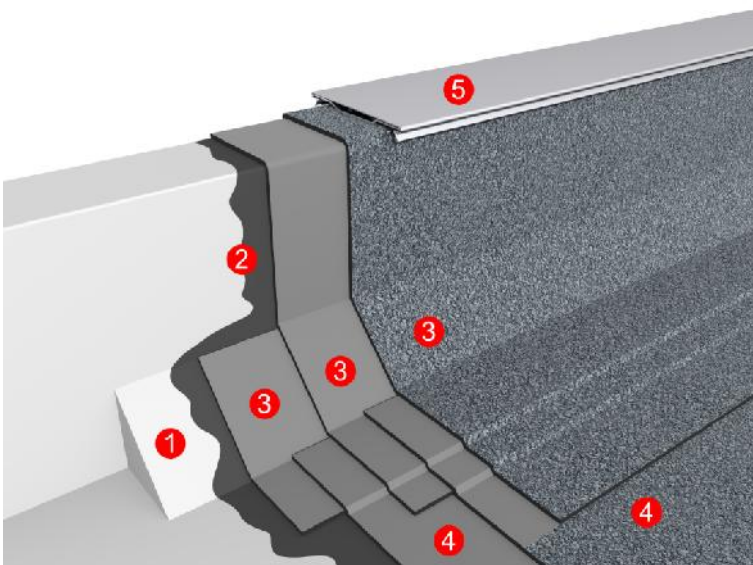
450

450

250

ICOPAL

. 10.



. 10

- 1)
- 2)
- 3)
- 4)
- 5)

ICOPAL

3

:

(,)

100

100 2.

:

(.).

4

;

III*480 "

".

91 "

".

Открытые участки тела необходимо защищать специальными защитными пастами и кремами

5

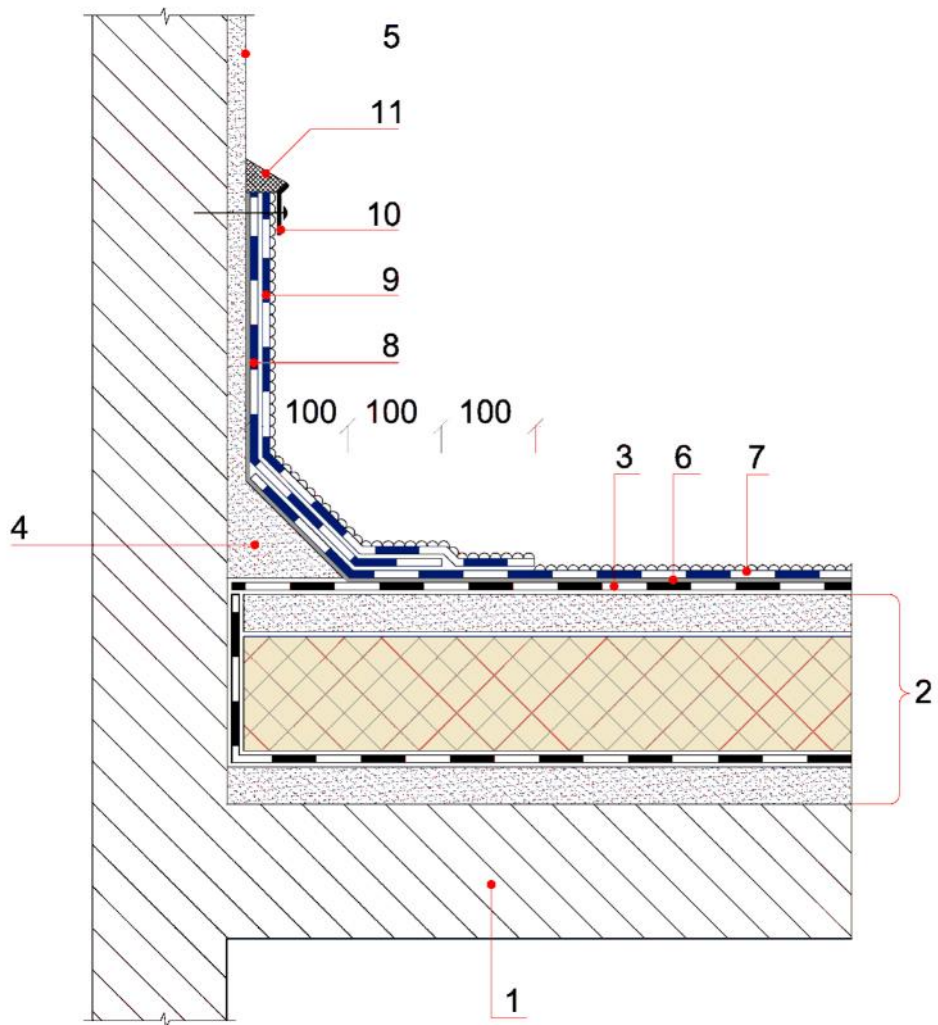
6

7

ICOPAL®

8(800) 444 75 25

www.icopal.ru

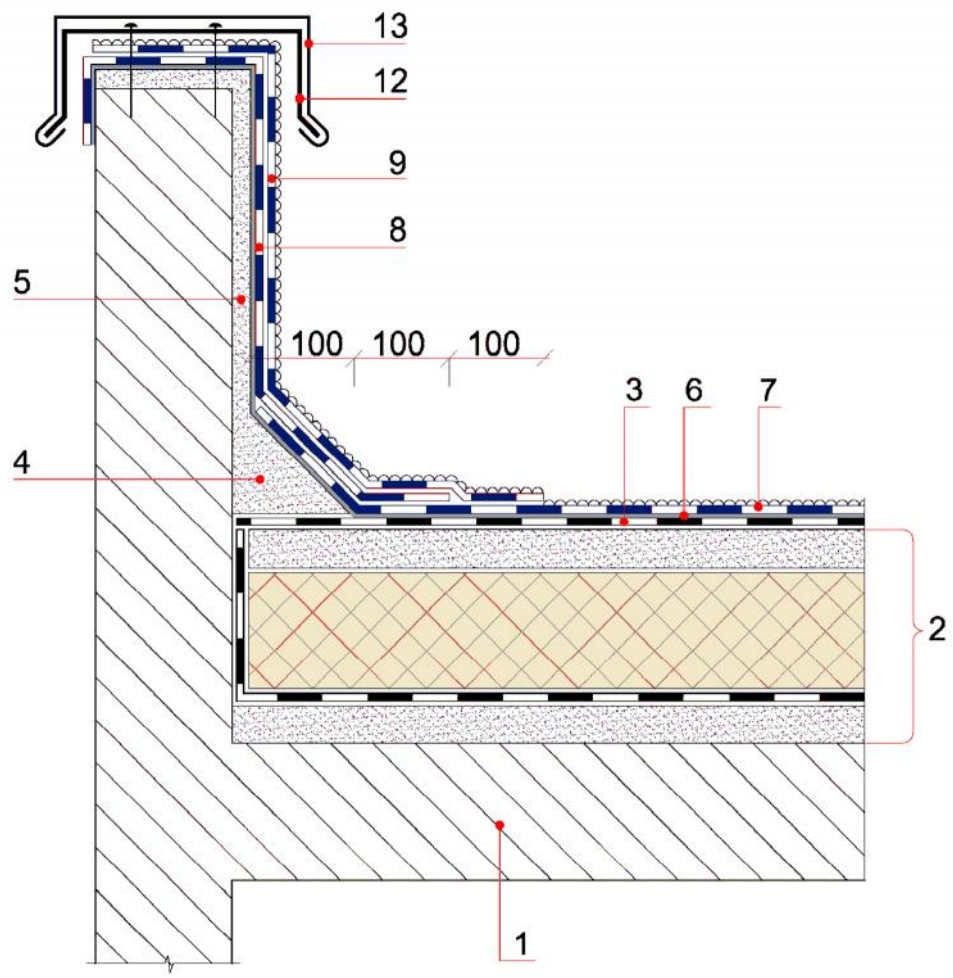


- 1
- 2
- 3
- 4
- 5
- 6
- 7
- 8
- 9
- 10
- 11

ICOPAL®

1.

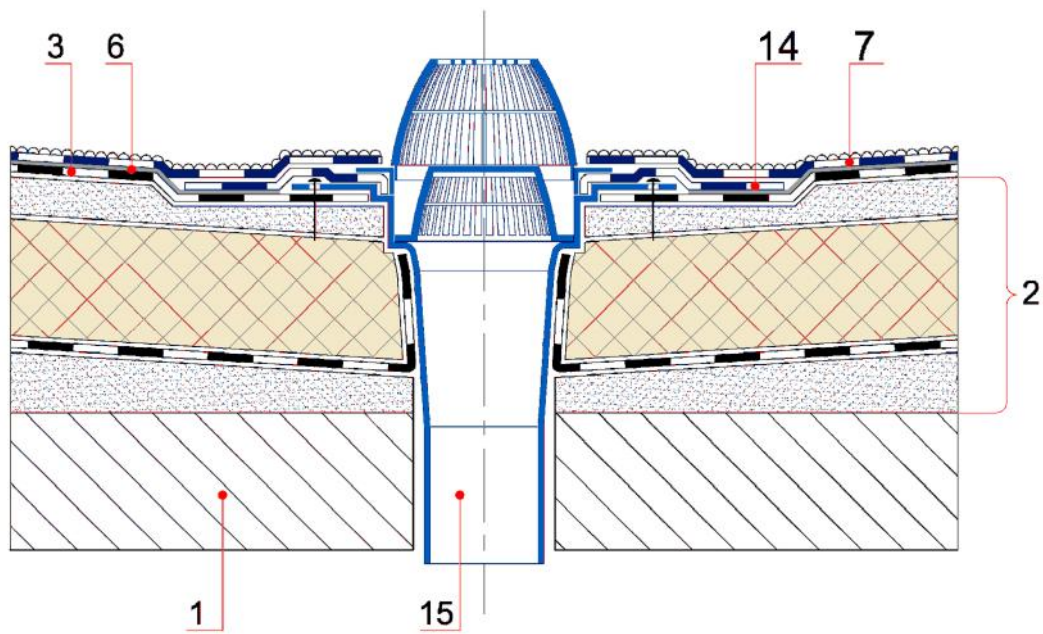




- 1
- 2
- 3
- 4
- 5
- 6
- 7
- 8
- 9
- 12
- 13

2.

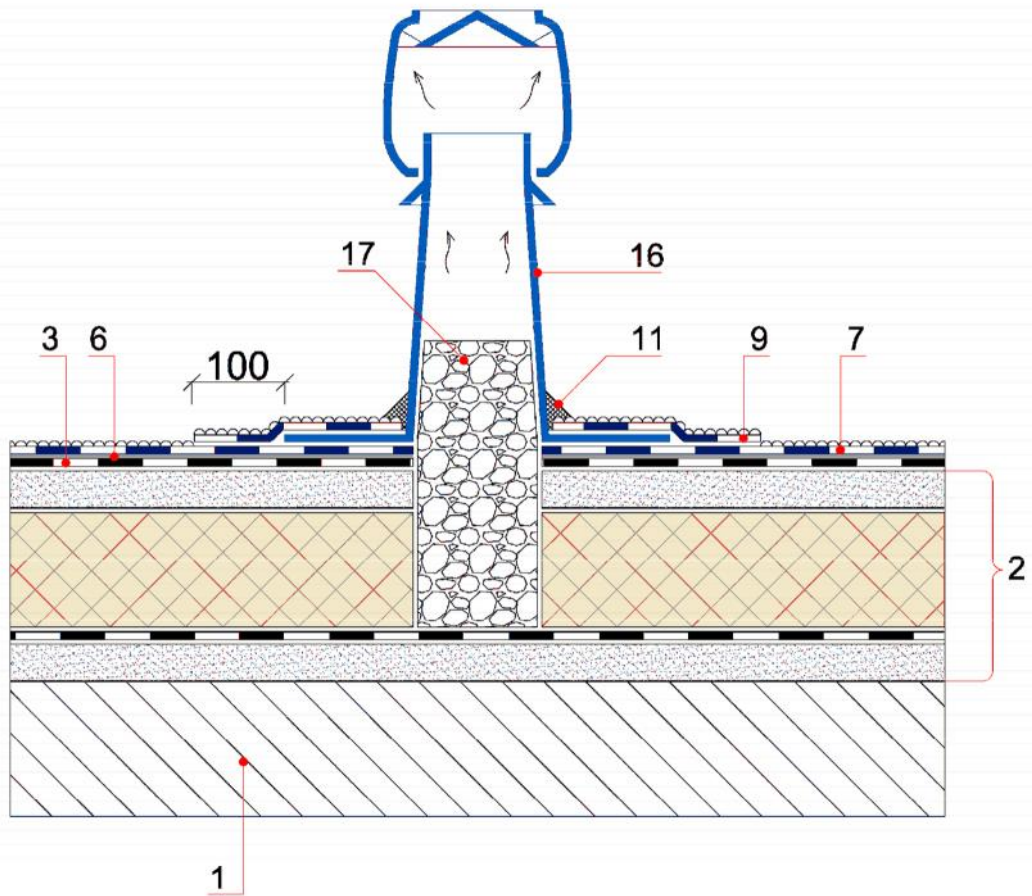




- 1
- 2
- 3
- 6
- 7
- 14
- 15

3.



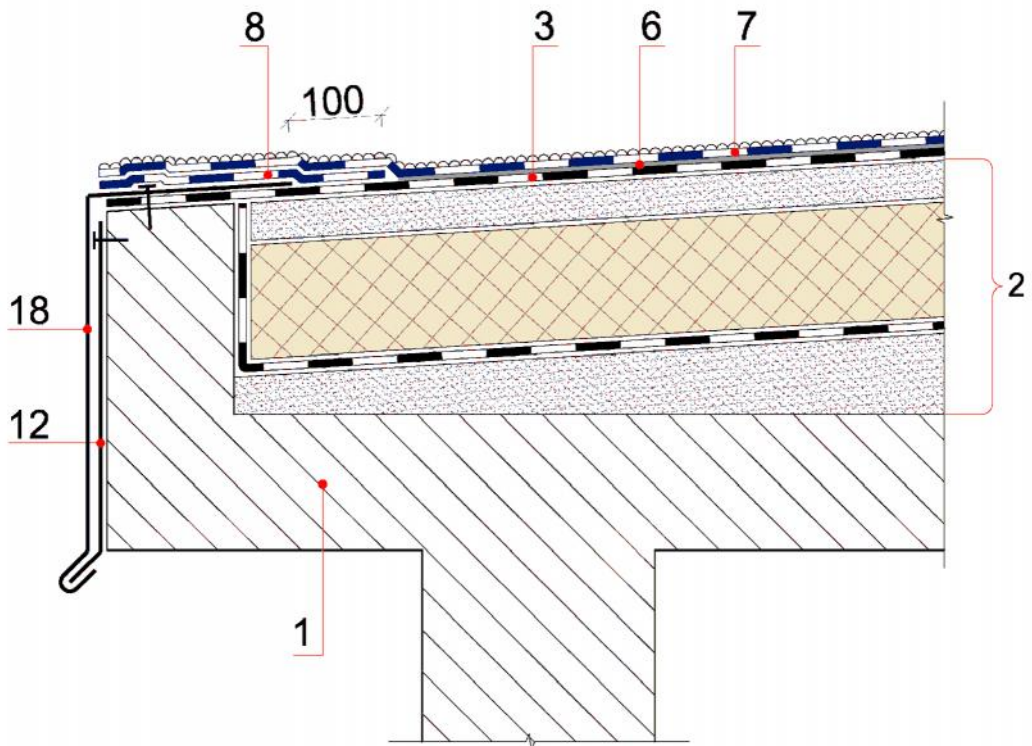


- 1.
- 2.
- 3.
- 6.
- 7.
- 9.
- 11.
- 16.
- 17.

ICOPAL®

4.





- 1.
- 2.
- 3.
- 6.
- 7.
- 8.
- 11.
- 18.

5.

()

